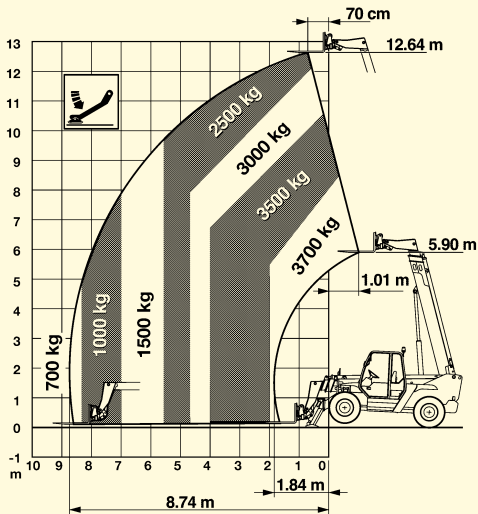
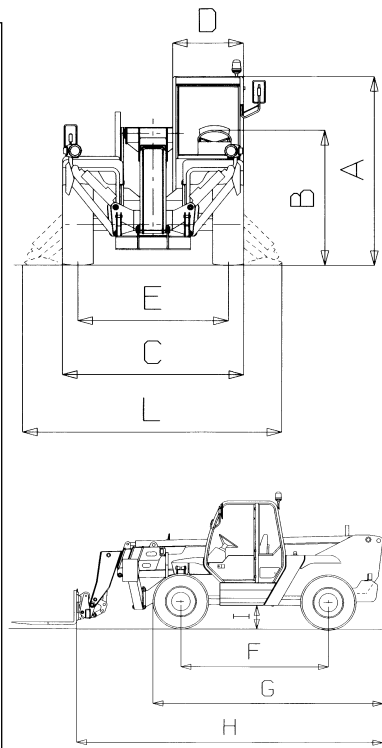


Lift Capacity Chart Stabilisers Extended



- (A) Height: 2.49 m (8 ft 3 in)
- (B) Height at steering wheel: 1.92 m (6 ft 4 in)
- (C) Width: 2.33 m (7 ft 8 in)
- (D) Inside cab width: 0.91 m (3 ft)
- (E) Track: 1.92 m (6 ft 4 in)
- (F) Wheelbase: 2.85 m (9 ft 5 in)
- (G) Length at front wheels: 4.44 m (14 ft 8 in)
- (H) Length at fork-holder plate: 5.53 m (18 ft 3 in)
- (I) Ground clearance: 0.46 m (1 ft 6 in)
- (L) Overall width stabilisers extended: 2.93 m (9 ft 8 in)



Specifications

	Metric	Imperial
Lift capacity (max.)	3,700 kg	8,157 lbs
Lift capacity at max. height	2,500 kg	5,511 lbs
Lift capacity at max. reach	700 kg	1,543 lbs
Lifting height (max.)	12.64 m	41 ft 8 in
Reach at max. height	70 cm	2 ft 3 1/2 in
Maximum forward reach	8.74 m	28 ft 10 in
Lifting speed	12 sec	12 sec
Lowering speed	8 sec	8 sec
Simultaneous extension 1st & 2nd booms	16 sec	16 sec
Simultaneous retraction 1st & 2nd booms	15 sec	15 sec
Inside turning radius	1.30m	4 ft 4 in
outside turning radius	3.99m	13 ft 1 1/2 in
Break-out force with 800 l shovel SAE J732/80	7,260 kg	16,000 lbs
Towing capacity at dynamometer	4,050 kg ¹	8,929 ¹ lbs
Obstruction angle	39°	39°
Departure angle	45°	45°
Engine Type	Perkins diesel engine 57.5kw (78 hp) Perkins Turbo Diesel 74.4kw (101 hp)	
Maximum travel speed	30 km/h ²	19 mph ²
Tank capacities		
Fuel	135 lt	29.7 gal
Engine oil	11.5 lt	2.5 gal
Coolant	15 lt	3,3 gal
Hydraulic oil	150 lt	33 gal
Forks	floating. length 1.20m (3ft 11 in). Section 130 x 50mm (6in x 2in)	
Fork holder plate rotation	145°	145°
Tyres	Type 400/70 - 20" 8-hole wheel rim (DIN 70361)	
Weight	9,300 kg ³	20,503 lbs ³

Specification modifiers when ordering both chassis levelling on front axle and quick coupling of tools:
¹ Towing capacity at dynamometer: 8,300 kg (18,298 lbs)
² Max. travel speed: 37 km/h (23 mph)
³ 9,500 kg (20,944 lbs) weight
 Hydraulic line on boom supplied

GTH-3713™